

# Enrollment trends

Fieldcrest CUSD 6

August 23, 2017

# 6<sup>th</sup> Day Enrollment 2017-2018

2017-2018

	Primary	Intermediate	Middle	HS	Total
PK/ECE	22				22
K	57				57
1	62				62
2	60				60
3		72			72
4		65			65
5		74			74
6			85		85
7			71		71
8			80		80
9				115	115
10				80	80
11				89	89
12				69	69
<b>Total</b>	201	211	236	353	<b>1001</b>

# Comparison 6<sup>th</sup> day enrollments


FY2018	1001	-55			
FY2017	1056	-44			
FY2016	1100	-57			
FY2015	1157	-8			
FY2014	1165	-27			
FY2013	1192	-5			
FY2012	1197	-27			
FY2011	1224	-42			
FY2010	1266	-47			
FY2009	1313	16			
FY2008	1297	8			
FY2007	1289	-16			
FY2006	1305	-11			
FY2005	1316	-12			
FY2004	1328	-19			
FY2003	1347	16			
FY2002	1331				

\*\*\*40 students eliminated from ECE in FY2011

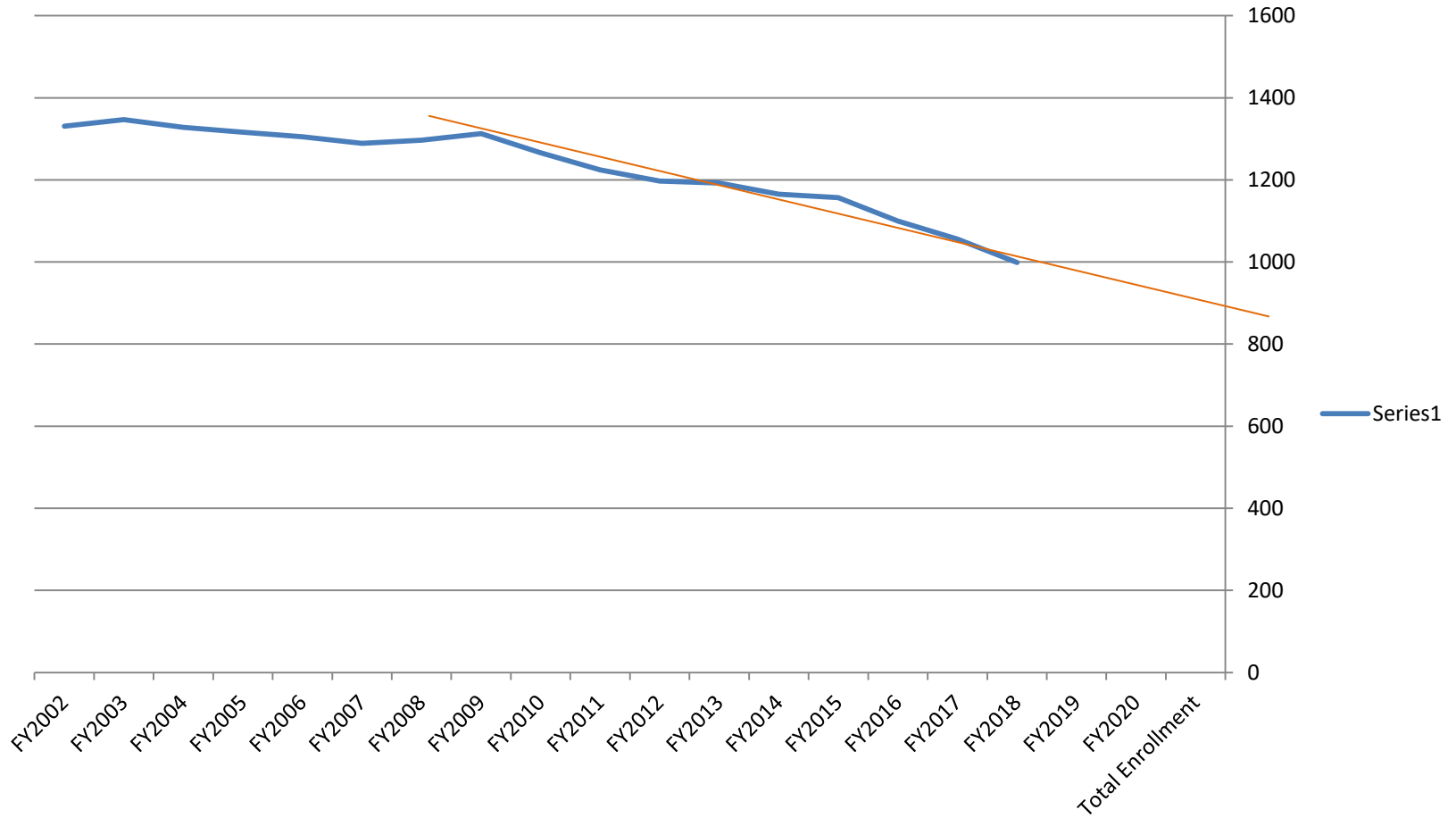
# Marked Drop Years

- ▶ FY16–FY18 - Down 156
- ▶ FY10–FY12 - Down 116

# Average Annual Enrollment Change

- ▶ 2 year – 49.5
  - ▶ 3 year – 50.5
  - ▶ 4 year – 32.5
  - ▶ 5 year – 17.5
  - ▶ 10 year – 16.0
- 
- ▶ Last year flat or positive FY09
  - ▶ Only three flat or positive years since FY02
- 


# Enrollment Graph



# FY18 Average Class Sizes


- ▶ 9-12 88.3
- ▶ 6-8 78.7
- ▶ 3-5 70.3
- ▶ K-2 59.7

# Why Do Our Students Leave?

- ▶ We reviewed why non–returning students left this year
  - ▶ While we can't account for every student, the biggest known issues were:
    - Families in flux
    - Job related issues, in a number of forms
    - Issues related to poverty
  - ▶ Other much smaller issues, now and past
    - Better opportunities for living and/or education elsewhere
- 



# Enrollment Projection Methods

- ▶ Moving faster than anticipated with last three years larger losses
  - ▶ Hard to predict future K enrollment, with four counties involved – no trend in county births matches our district
  - ▶ Using current K number ranges, using 57 in K for next five years
  - ▶ Also study current trends for each class to make prediction
- 

# Five Year Projections

	2018-2019	2019-2020	2020-2021	2021-2022	2022-2023
Grades K-2	175	175	171	171	171
Grades 3-5	202	194	175	175	171
MS	230	227	217	199	191
HS	376	350	342	310	294
<b>Total</b>	<b>983</b>	<b>946</b>	<b>905</b>	<b>855</b>	<b>827</b>

# Enrollment Decline Impact

- ▶ Over the next few years
  - Building space usage and repair/replace scenarios
  - Staffing numbers
  - Based in part on enrollment
    - General State Aid
    - State/federal grants (Title I, II, IV)
  - Ability to offer curricular and extra curricular programs?

# Questions?

